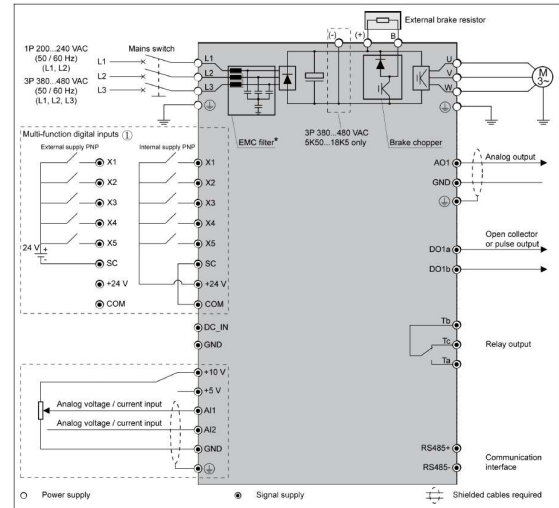


## Rexroth EFC 5610 – Frequenzumrichter mit leistungsfähiger Vektorregelung für drehmomentstarke Anwendungen.

2nd Generation **Rexroth** The Drive & Control Company  
Bosch Group



5 Digitaleingänge, 1 Digitalausgang, 1 Relaisausgang, 2 Analogeingänge, 1 Analogausgang, Mini USB, EMV Filter, Brems-Chopper, Hohes Startdrehmoment 200%, PID Regler, Optionsmodule, Abnehmbares Bedienteil mit integriertem Poti, STO  
<http://www.boschrexroth.de/efc3610-5610>

### 1x230VAC

EFC5610-0K40-1P2-MDA-7P-NNNNN-L1NN	0.40 kW, 1 AC 200 - 240 V, 50/60 Hz, 2.3 A	€ 180,--
EFC5610-0K75-1P2-MDA-7P-NNNNN-L1NN	0.75 kW, 1 AC 200 - 240 V, 50/60 Hz, 3.9 A	€ 210,--
EFC5610-1K50-1P2-MDA-7P-NNNNN-L1NN	1.50 kW, 1 AC 200 - 240 V, 50/60 Hz, 7.0 A	€ 255,--
EFC5610-2K20-1P2-MDA-7P-NNNNN-L1NN	2.20 kW, 1 AC 200 - 240 V, 50/60 Hz, 9.7 A	€ 280,--

### 3x400VAC

EFC5610-0K40-3P4-MDA-7P-NNNNN-L1NN	0.40 kW, 3 AC 380 - 480 V, 50/60 Hz, 1.2 A	€ 210,--
EFC5610-0K75-3P4-MDA-7P-NNNNN-L1NN	0.75 kW, 3 AC 380 - 480 V, 50/60 Hz, 2.1 A	€ 230,--
EFC5610-1K50-3P4-MDA-7P-NNNNN-L1NN	1.50 kW, 3 AC 380 - 480 V, 50/60 Hz, 3.7 A	€ 280,--
EFC5610-2K20-3P4-MDA-7P-NNNNN-L1NN	2.20 kW, 3 AC 380 - 480 V, 50/60 Hz, 5.1 A	€ 305,--
EFC5610-3K00-3P4-MDA-7P-NNNNN-L1NN	3.00 kW, 3 AC 380 - 480 V, 50/60 Hz, 7.6 A	€ 320,--
EFC5610-4K00-3P4-MDA-7P-NNNNN-L1NN	4.00 kW, 3 AC 380 - 480 V, 50/60 Hz, 8.8 A	€ 360,--
EFC5610-5K50-3P4-MDA-7P-NNNNN-L1NN	5,5 kW, 3 AC 380 - 480 V, 50/60 Hz, 12.7 A	€ 455,--
EFC5610-7K50-3P4-MDA-7P-NNNNN-L1NN	7,5 kW, 3 AC 380 - 480 V, 50/60 Hz, 16.8 A	€ 510,--
EFC5610-11K0-3P4-MDA-7P-NNNNN-L1NN	11 kW, 3 AC 380 - 480 V, 50/60 Hz, 24.3 A	€ 695,--
EFC5610-15K0-3P4-MDA-7P-NNNNN-L1NN	15 kW, 3 AC 380 - 480 V, 50/60 Hz, 32.4 A	€ 735,--
EFC5610-18K5-3P4-MDA-7P-NNNNN-L1NN	18,5 kW, 3 AC 380 - 480 V, 50/60 Hz, 39.2 A	€ 1050,--
EFC5610-22K0-3P4-MDA-7P-NNNNN-L1NN	22 kW, 3 AC 380 - 480 V, 50/60 Hz, 45.2 A	€ 1185,--
EFC5610-30K0-3P4-MDA-7P-NNNNN-L1NN	30 kW, 3 AC 380 - 480 V, 50/60 Hz, 60.8 A	€ 1730,--
EFC5610-37K5-3P4-MDA-7P-NNNNN-L1NN	37 kW, 3 AC 380 - 480 V, 50/60 Hz, 73.7 A	€ 1980,--
EFC5610-45K0-3P4-MDA-7P-NNNNN-L1NN	45 kW, 3 AC 380 - 480 V, 50/60 Hz, 89.0 A	€ 2350,--
EFC5610-55K0-3P4-MDA-7P-NNNNN-L1NN	55 kW, 3 AC 380 - 480 V, 50/60 Hz, 108 A	€ 2760,--
EFC5610-75K0-3P4-MDA-7P-NNNNN-L1NN	75 kW, 3 AC 380 - 480 V, 50/60 Hz, 147 A	€ 3680,--
EFC5610-90K0-3P4-MDA-7P-NNNNN-L1NN	90 kW, 3 AC 380 - 480 V, 50/60 Hz, 176 A	€ 4560,--